



Protector Weep Hole Screen



Troubleshooting Installation

Protector Weep Hole Screens are designed to fit weep holes in 75mm high brick with allowance for mortar (as per Australian Standards). In some cases, particularly in older brick homes, the weep holes can be much shorter and/or narrower.

If your weep holes are **TOO HIGH**, contact our friendly team.

If the weep hole is too short

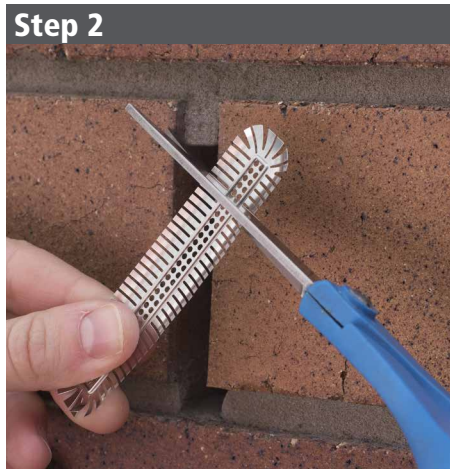
Tools you will need: Scissors (don't use your best ones), Protector applicator tool.

Step 1



Line the Protector up with the weep hole to determine how much you need to trim off. For a good fit add an extra 5 mm to the length.

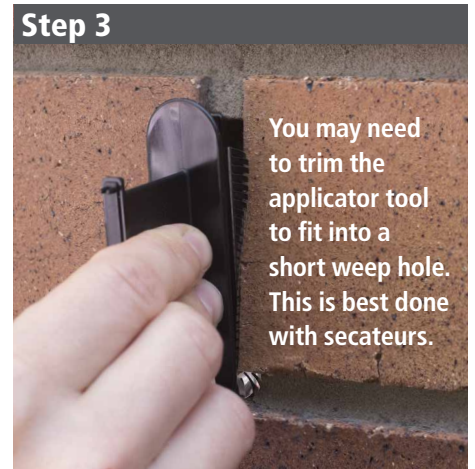
Step 2



Cut the Protector to size with scissors.

FOR THE BEST BUSHFIRE PROTECTION, MAKE SURE THERE ARE NO GAPS OF MORE THAN 3MM BETWEEN THE PROTECTOR AND THE BRICK.

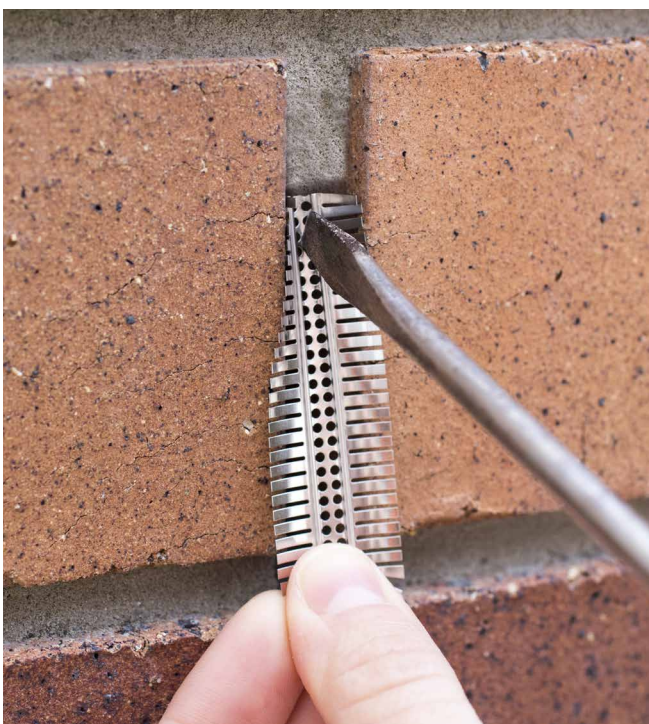
Step 3



You may need to trim the applicator tool to fit into a short weep hole. This is best done with secateurs.

Push the Protector into the weep hole with the applicator tool.

If the weep hole is too narrow



Protector Weep Hole Screens are designed to fit weep holes that are 7–17 mm wide, but we know that not all homes are built to spec!

Some weep holes may be quite narrow, and Weepa's applicator tool may be too wide to use. If a weep hole is unusually small, you'll need to use a different tool and we recommend using a **flat head screwdriver**.

Steps

1. Line the Protector up with the weep hole.
2. Place the flat head screwdriver at the top of the Protector's rib.
3. Starting at the top, push the Protector into the weep hole, followed with the middle and finish with the bottom of the rib.

Adjust the Protector as necessary.

Note: If you need to remove the Protector, pointy nose pliers will do the trick. Simply pinch the fringe with the pliers and pull the Protector out.